

# CONTENTS

---

## ABOUT HWAM

- 6 HWAM® Autopilot™
- 8 HWAM® SmartControl™
- 10 FAQ before choosing a wood-burning stove
- 12 Stone cladding & heat storage
- 14 Design your own HWAM wood-burning stove
- 16 Design and craftsmanship

## INSPIRATION

- 19 Get inspired ...
- 20 HWAM 2600
- 22 HWAM 3100
- 24 HWAM 3500
- 26 HWAM 3600
- 28 HWAM 3700
- 30 HWAM 4500
- 32 HWAM 4600
- 34 HWAM 5500
- 36 HWAM 5600
- 38 HWAM I 40/55
- 40 HWAM I 40/56
- 42 HWAM Classic 4
- 44 HWAM Accessories
- 46 Product overview

## TECHNICAL SPECIFICATIONS

- 50 Selection & placement of a wood burning stove
- 52 HWAM 2600
- 54 HWAM 3100
- 56 HWAM 3500
- 58 HWAM 3600
- 62 HWAM 3700
- 64 HWAM 4500
- 68 HWAM 4600
- 70 HWAM 5500
- 72 HWAM 5600
- 74 HWAM I 40/55
- 76 HWAM I 40/56
- 78 HWAM Classic 4
- 80 Test results
- 82 Approvals & registrations

# 12 series

---

HWAM wood-burning stoves come in 12 different stove series with heights between 70 and 162.50 cm.

Choose a wall mounted, freestanding or modular model. Choose a model with or without side glass. Individualize your stove with a unique stone cladding.

The choices are plentiful, no matter what style you are going for. Make your wood-burning stove dreams come true!

Which series is best suited to your personality?  
Take a look and get inspired...



HWAM 3110c on steel bench



More than 50 years of  
quality, design &  
production in Denmark.





# CLEAN COMBUSTION AUTOMATICALLY WITH HWAM® AUTOPILOT™

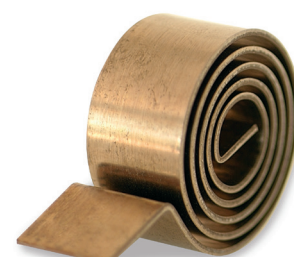
A HWAM wood-burning stove holds a little secret. A secret which has been kept for 40-odd years. It is a heat-sensitive spring at the core of your HWAM wood-burning stove by the name of **HWAM® Autopilot™**.

Once you have lit the fire, **HWAM® Autopilot™** takes over and automatically regulates the air supply. As the heat rises and falls in the combustion chamber, the heat-sensitive spring will cause the three mechanical air dampers to open or close depending on the current temperature in the combustion chamber. In effect, optimum combustion without you having to do anything. Simply set the regulation to your heating requirements. Easy, convenient, eco-friendly and economical.

**HWAM® Autopilot™** is standard in all HWAM wood-burning stoves and included in the price.



Learn more about **HWAM® Autopilot™** in this video:



# TIME FOR THE IMPORTANT THINGS IN LIFE? THE ANSWER IS HWAM® SMARTCONTROL™

**HWAM® SmartControl™** adjusts the essential air supply in your wood-burning stove. All you have to do is light the fire and add new firewood. **HWAM® SmartControl™** will do the rest. You will get a message when it is time to add more firewood.

The oxygen meter and the temperature sensor, respectively, measures the level of oxygen and the temperature of the smoke and the smoke outlet. Both send a message to the airbox which regulates the dampers. A room sensor measures the temperature in the room, always leaving a pleasantly-heated room.

Learn more about **HWAM® SmartControl™** in this video:



HWAM® SmartControl™ is an add-on to be ordered in the shop at the time of purchase.



**THINK OF THE ENVIRONMENT**



**SAVE MONEY**



**HIGH LEVEL OF COMFORT**

# FAQ

## WHAT TO CONSIDER BEFORE CHOOSING A WOOD-BURNING STOVE

Taste and style vary from person to person, so here we will let you be the expert. However, before you buy a wood-burning stove, there are a few things worth considering.

### **Why do you want a wood-burning stove?**

Is it because you live in a cold house? Do you want to save money on the heating bill, or is it for the sake of the cosy atmosphere?

### **How many m<sup>2</sup> are to be heated?**

It is important that the heat emitted by the wood-burning stove is adequate for the m<sup>2</sup> to be warmed up. As a rule of thumb, you can assume that approximately 1 kW is required to heat 20 m<sup>2</sup>, provided the house is reasonably well insulated. Ask your HWAM retailer for more information.

### **How easy should it be?**

All HWAM stoves are equipped with HWAM® Autopilot™ as standard, an automatic air control that ensures good combustion. If you would like it as easy as it comes, then choose a model with built-in HWAM® SmartControl™. The only thing you need to do is light the fire as usual, set the desired temperature via an app on your smartphone and then enjoy the heat and the dancing flames. You will receive a message through your app when it is time to add new firewood.

### **Requirements for the location?**

Are there any special constructions in your home that render installation of the wood-burning stove impossible in certain areas? Is there anything you should be aware of in relation to combustible material?

### **Requirements for new houses?**

If you live in a newly built house, you may need to install a fresh air system in your wood-burning stove, as newly built houses are very well insulated, and the air circulating in the house is often reused in the ventilation system. This means that there will not be enough air in the house for either lighting up nor combustion.

### **Requirements for chimney & smoke pipe**

The chimney must be of a sufficient height to enable an adequate draft and to prevent smoke problems. The wood-burning stove requires a draft of at least 12 Pa. The chimney opening should always be at least the size of the outlet socket of the stove (Ø125mm/5" or Ø150mm/6"). The chimney must have an easily accessible soot door. Smoke pipe and chimney must always be suitable for a stove connection. Ask your HWAM retailer for more information.

### **Requirements for floors and/or walls**

You should check whether the floor on which your wood-burning stove will be standing is stable enough to carry the weight, or whether the wall which your stove or insert will hang on/be built into is able to withstand weight. We recommend that you consult a specialist. If the wood-burning stove is placed on a flammable floor, make sure to protect the floor from embers falling out. You can choose tiles, sheet metal or a glass plate depending on what style you prefer. See more about distances to combustible material on page 52-79.

### **Ask an expert**

Once you have considered some of these questions, it will hopefully be easier for you to make a decision. If you are still in doubt, you can always visit your local HWAM retailer for a talk about the right choice for you.





**WE BELIEVE IN FOCUSING ON  
CLEAN COMBUSTION  
FOR THE ENVIRONMENT  
& THE FUTURE**



# STONE CLADDING & HEAT STORAGE

When you choose a wood-burning stove with stone cladding, you get a stove with a unique appearance, since every stone has its own distinctive feature. Besides, there are other tangible benefits.

We know of heat storage from masonry stoves, where the heat is stored in the stones surrounding the combustion chamber. Heat storage in a wood-burning stove is the stove's ability to quickly and comfortably distribute the convection heat in the room combined with the masonry stove's capacity for heat storage.

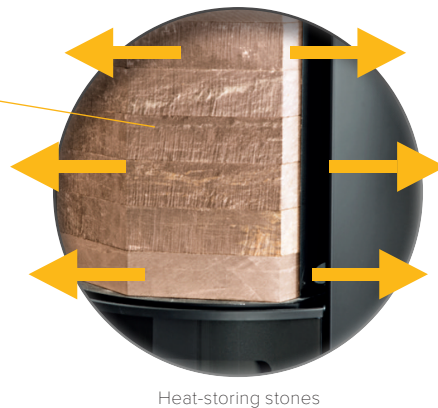
Selected HWAM models are designed with a heat storage compartment that can be filled with stones with a special capacity for storing the heat from the wood-burning stove

and then slowly give it off to the room. This means that you can enjoy the heat long after the fire has gone out.

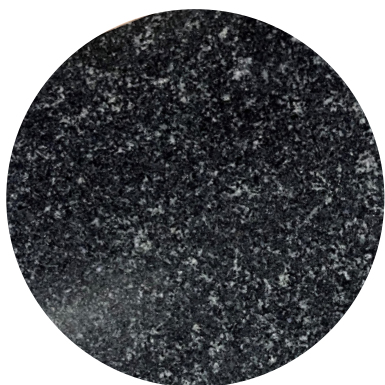
If you want a wood-burning stove that stores the heat, you can choose one of the following HWAM models with natural stone cladding: 3520, 3640, 3660, 4540, 4560, 4640 and 4660.

If you would like a stove with a heat storage compartment, you can choose between these HWAM models: 3130, 3520, 3650, 3660, 3760, 4550, 4560, 4660, 5560, 5580, 5650 and 5670.

Below is an illustration of a wood-burning stove with and without heat-storing stones.



A wood-burning stove with heat storage stones means more continuous heat in the room with the same amount of firewood.



### **Dark Galaxy - NEW!**

Dark Galaxy is a type of granite that is very hard and dense and therefore easy to work with – undoubtedly one of the most beautiful natural stones on the market. The Dark Galaxy color is quite uniform, so the whole surface looks very even. A black stone with white spots reminiscent of a night sky.



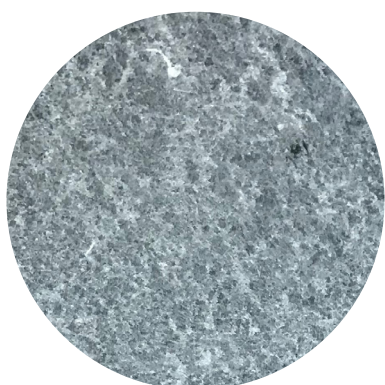
### **Moca Cream - NEW!**

Limestone was formed by the impact and fusion of rocks, shells, corals and other organisms under the seabed hundreds of millions of years ago and after prolonged collisions with the earth's crust and extrusion deposits. The primary color is white with calcite lines and spots, fossils or shell structures.



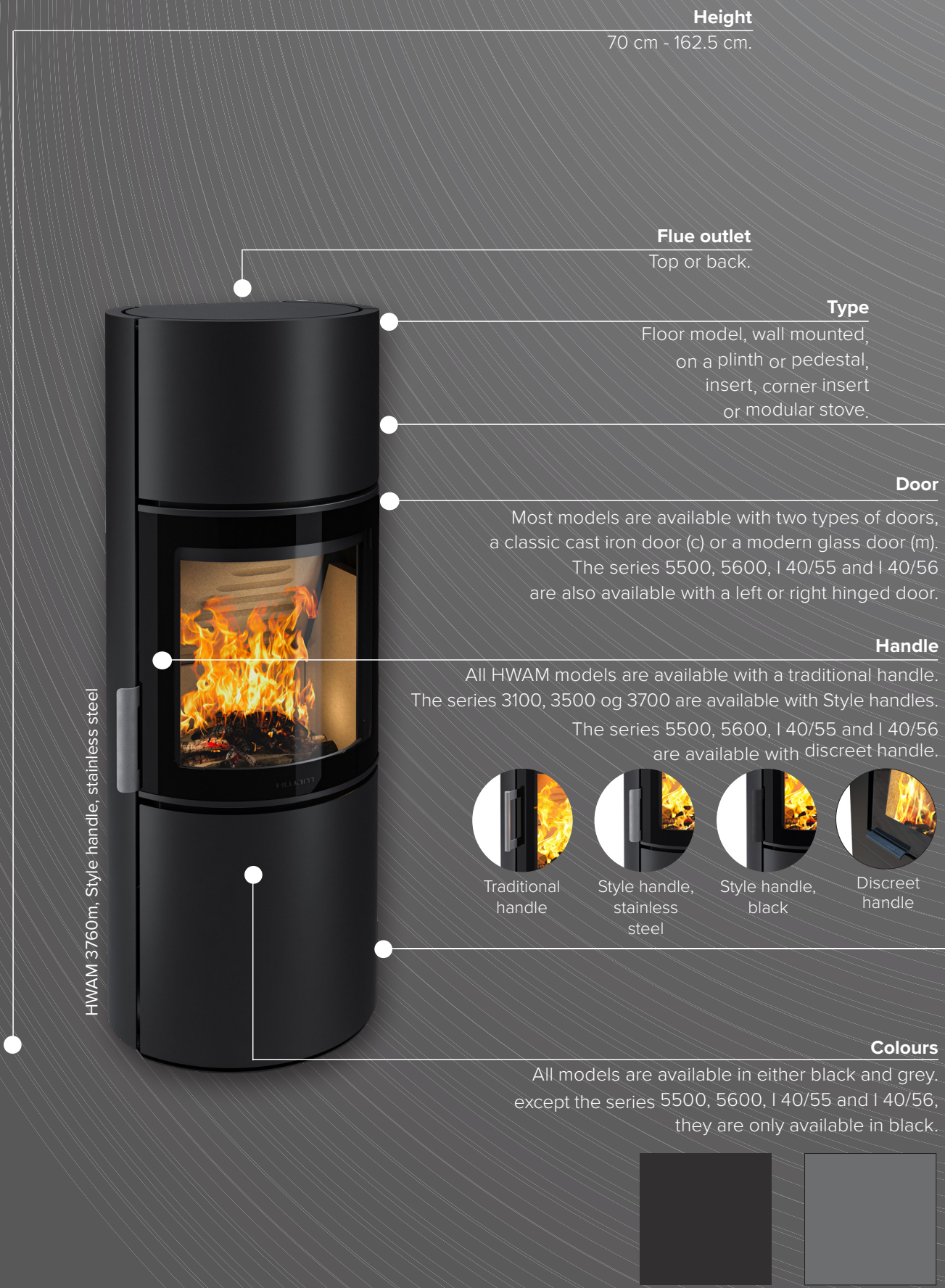
### **Tobacco**

Sandstone was originally deposited sand that has later been compressed and hardened. The sand was originally deposited on seabeds and riverbeds millions of years ago and was later compressed under great pressure. It's the sand that gives sandstone its color, and the play of color in the brown limonite deposits is what makes this natural stone so beautiful.



### **Soapstone**

Soapstone is a metamorphic rock that consists mainly of talc, which makes it very soft. The name soapstone comes from its "soapy" feel and softness. The color ranges from gray-green to gray, and each stone is completely unique. Soapstone is fireproof and therefore ideal for cladding wood burning stoves.



HWAM 3760m, Style handle, stainless steel

**Height**

70 cm - 162.5 cm.

**Flue outlet**

Top or back.

**Type**

Floor model, wall mounted, on a plinth or pedestal, insert, corner insert or modular stove.

**Door**

Most models are available with two types of doors, a classic cast iron door (c) or a modern glass door (m). The series 5500, 5600, I 40/55 and I 40/56 are also available with a left or right hinged door.

**Handle**

All HWAM models are available with a traditional handle. The series 3100, 3500 og 3700 are available with Style handles. The series 5500, 5600, I 40/55 and I 40/56 are available with discreet handle.



Traditional handle



Style handle, stainless steel



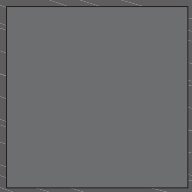
Style handle, black



Discreet handle

**Colours**

All models are available in either black and grey, except the series 5500, 5600, I 40/55 and I 40/56, they are only available in black.



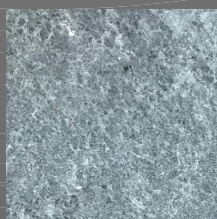
# DESIGN YOUR OWN HWAM WOOD-BURNING STOVE

Once you have decided which model best suits your needs, it is time to choose the perfect look. There are many ways to tailor your stove to exactly fit your style and home. What do you prefer? A classic look? A raw look? Or a modern look?

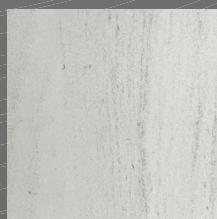
Under our technical specifications from page 52-79, you can see all our models. Take a look at the possibilities and find inspiration on how to put together your very own HWAM model.

## Natural stone cladding

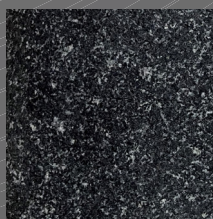
A wood-burning stove with natural stone cladding has two functions. Visually, the stone creates a unique appearance, with no piece of stone being the same. Purely functionally, the heat-storing capacity of the stone extends the heat effect.



Soapstone



Moca Cream



Dark Galaxy



Tobacco

## Function

All HWAM wood-burning stoves are equipped with **HWAM® Autopilot™** as standard to help you achieve good combustion. As the temperature rises and falls in the combustion chamber, a bimetallic spring will expand and contract, thereby regulating the supply of air. When the fire is dying out, the damper will automatically open again, and you can add firewood or let the fire die out.

Would you like it as easy as it comes? Then you should choose a model with built-in **HWAM® SmartControl™**. **HWAM® SmartControl™** is electronic control of the air for optimum combustion. The only thing you need to do is light the fire as usual, set the temperature via an app on your smartphone and enjoy the heat and the dancing flames. You will receive a message through the app when it is time to add more firewood.

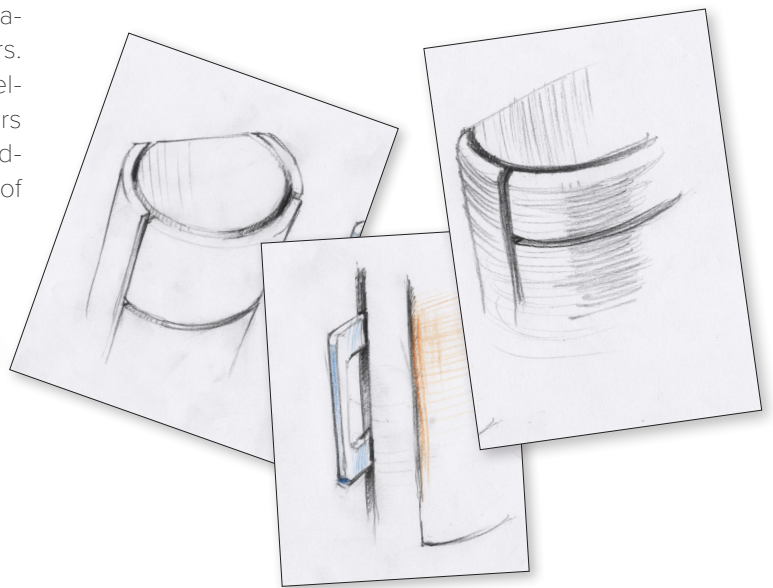
# DESIGN & CRAFTSMANSHIP



We believe that innovation and development go hand in hand with production. Take production out of the equation, and you lose the practical knowledge that makes it possible to translate design ideas into real stoves that meet aesthetic as well as functional needs and demands.

This is why all our wood-burning stoves and inserts are manufactured at our factory in Hørning and have been for more than 50 years. The process starts with our talented designers whom we have worked with for years. When their ideas and visions have manifested themselves in sketches, they open a dialogue with our designers and sales management for the development of a wood-burning stove or an insert that satisfies the demands of our customers.

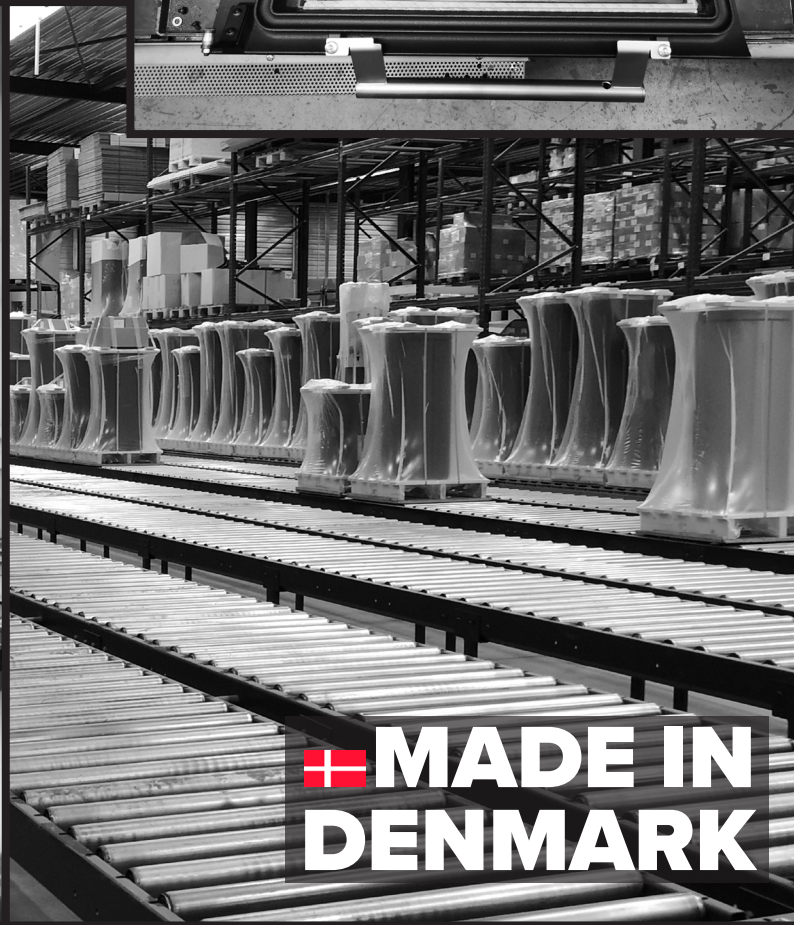
Once the stove has been approved in relation to combustion and safety requirements, it will be put into production. Each single HWAM wood-burning stove is produced to order at our modern factory, and the processes are implemented and supervised by our highly skilled employees. This ensures a stable flow, better control of production and thus a final stove of outstanding quality.



**Sørig & Jacobsen**



**Anders C. FASTERHOLDT**



 **MADE IN DENMARK**





## GET INSPIRED...

On the following pages, we will introduce you to the 12 different HWAM series and give you inspiration on how to find the right model for you.

Do you need a large or small model?

Should it be wall-mounted or free-standing?

Do you prefer a classic wood burning stove or do you want a model with a modern twist?

The options are many and the choice is yours.



You will find a **product overview** on page 46.

**Technical specifications** can be found on page 50-79.



HWAM 2630c

With  
HWAM® Autopilot™  
as standard

### Specifications



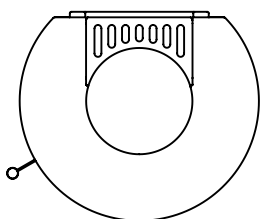
Nominal heat output	4.7 kW
Net efficiency	80%
Smoke outlet	Ø125/Ø150 mm
Width of combustion chamber	270 mm
Energy efficiency class	<b>A</b>

For more information about the HWAM 2600-Series, see **page 52**.

# HWAM 2600

Design: Sørig & Jacobsen

## HWAM 2600 top view



**HWAM 2610m**

side glass  
H 700 mm  
W 430 mm  
D 377 mm



**HWAM 2620c**

plinth  
H 730 mm  
W 430 mm  
D 377 mm



**HWAM 2610c**

side glass &  
pedestal  
H 1000 mm  
W 430 mm  
D 377 mm



**HWAM 2630c**

side glass  
H 1000 mm  
W 430 mm  
D 377 mm



**HWAM 2630m**

side glass, grey  
H 1000 mm  
W 430 mm  
D 377 mm



**HWAM 2640m**

H 1000 mm  
W 430 mm  
D 377 mm







Three different handle options available

With HWAM® Autopilot™ as standard and HWAM® SmartControl™ as an option\*

HWAM 3120c

\* Not HWAM 3110

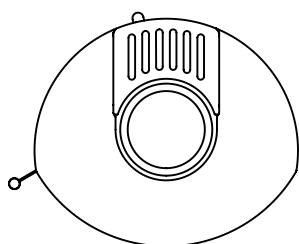
Specifications		
Nominal heat output	4.8 kW	4.5 kW
Net efficiency	79%	81%
Smoke outlet	Ø125 / Ø150 mm	Ø150 mm
Width of combustion chamber	330 mm	330 mm
Energy efficiency class		

For more information about the HWAM 3100-Series, see **page 54**.

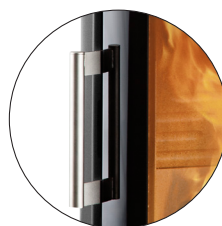
# HWAM 3100

Design: Anders C. FASTERHOLDT

## HWAM 3100 top view



## Handles



Traditional handle



Style handle, stainless steel



Style handle, black



**HWAM 3110c**  
Style handle, stainless steel  
H 755 mm  
W 475 mm  
D 408 mm



**HWAM 3110c**  
plinth  
H 835 mm  
W 475 mm  
D 408 mm



**HWAM 3110m**  
pedestal  
H 1055 mm  
W 475 mm  
D 408 mm



**HWAM 3120m**  
H 1004 mm  
W 475 mm  
D 408 mm



**HWAM 3120c**  
H 1004 mm  
W 475 mm  
D 408 mm



**HWAM 3130m**  
H 1260 mm  
W 475 mm  
D 408 mm



Three different handle options available

With HWAM® Autopilot™ as standard and HWAM® SmartControl™ as an option

HWAM 3520c – Style handle, black

**Specifications**



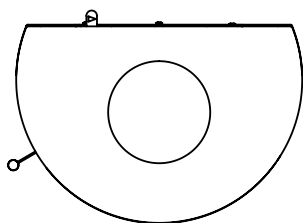
Nominal heat output	4.8 kW	4.5 kW
Net efficiency	79%	81%
Smoke outlet	Ø125 / Ø150 mm	Ø150 mm
Width of combustion chamber	330 mm	330 mm
Energy efficiency class	<b>A</b>	<b>A+</b>

For more information about the HWAM 3500-Series, see **page 56**.

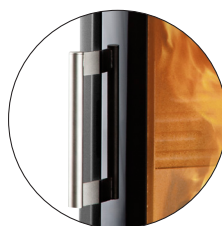
# HWAM 3500

Design: Sørig & Jacobsen

## HWAM 3500 top view



## Handles



Traditional handle



Style handle, stainless steel



Style handle, black



### HWAM 3520c

Style handle, stainless steel  
H 1260 mm  
W 540 mm  
D 375 mm



### HWAM 3520m

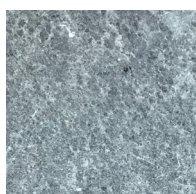
H 1260 mm  
W 540 mm  
D 375 mm



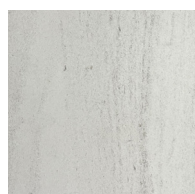
### HWAM 3520c

soapstone  
H 1270 mm  
W 540 mm  
D 375 mm

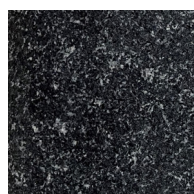
## Natural stone claddings



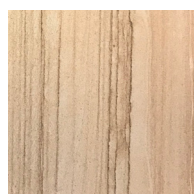
Soapstone



Moca Cream



Dark Galaxy



Tobacco



With  
 HWAM® Autopilot™  
 as standard and  
 HWAM® SmartControl™  
 as an option

HWAM 3660c - Moca Cream

**Specifications**



Nominal heat output	6.0 kW	6.0 kW
Net efficiency	78.3%	80.7%
Smoke outlet	Ø150 mm	Ø150 mm
Width of combustion chamber	380 mm	380 mm
Energy efficiency class	<b>A</b>	<b>A+</b>

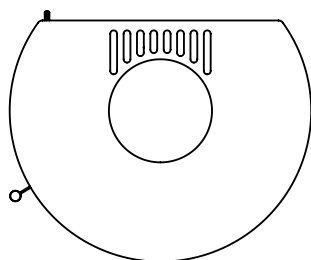
For more information about the HWAM 3600-Series, see **page 58**.



# HWAM 3600

Design: Sørig & Jacobsen

HWAM 3600 top view



**HWAM 3630c**

side glass  
H 1148 mm  
W 556 mm  
D 442 mm



**HWAM 3640m**

H 1148 mm  
W 556 mm  
D 442 mm



**HWAM 3640c**

soapstone  
H 1148 mm  
W 600 mm  
D 442 mm



**HWAM 3650c**

side glass  
H 1508 mm  
W 556 mm  
D 442 mm



**HWAM 3650m**

side glass  
H 1508 mm  
W 556 mm  
D 442 mm



**HWAM 3660c**

H 1508 mm  
W 556 mm  
D 442 mm



**HWAM 3660m**

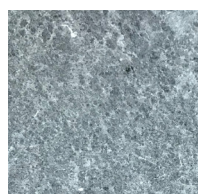
H 1508 mm  
W 556 mm  
D 442 mm



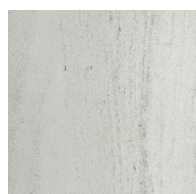
**HWAM 3660m**

soapstone  
H 1508 mm  
W 600 mm  
D 442 mm

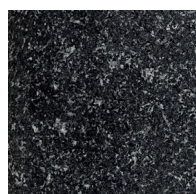
## Natural stone claddings



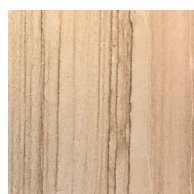
Soapstone



Moca Cream



Dark Galaxy



Tobacco



Three different handle options available

With HWAM® Autopilot™ as standard and HWAM® SmartControl™ as an option

HWAM 3740m - Style handle, black

**Specifications**



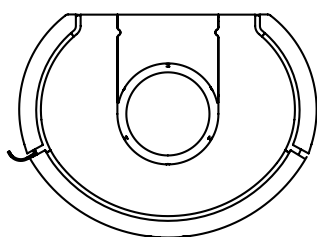
Nominal heat output	4.8 kW	4.5 kW
Net efficiency	79%	81%
Smoke outlet	Ø150 mm	Ø150 mm
Width of combustion chamber	330 mm	330 mm
Energy efficiency class	<b>A</b>	<b>A+</b>

For more information about the HWAM 3700-Series, see **page 62**.

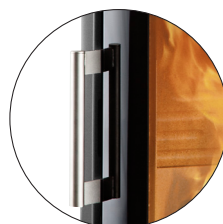
# HWAM 3700

Design: Sørig & Jacobsen

## HWAM 3700 top view



## Handles



Traditional handle



Style handle, stainless steel



Style handle, black



### HWAM 3740c

H 1025 mm  
W 499 mm  
D 375 mm



### HWAM 3740m

Style handle, stainless steel  
H 1025 mm  
W 499 mm  
D 375 mm



### HWAM 3760m

H 1254 mm  
W 499 mm  
D 375 mm



### HWAM 3760m

Style handle, black  
H 1254 mm  
W 499 mm  
D 375 mm

Top outlet



Back outlet





With  
 HWAM® Autopilot™  
 as standard and  
 HWAM® SmartControl™  
 as an option\*

HWAM 4530c

\* Not HWAM 4510/4520 on a low base.

**Specifications**



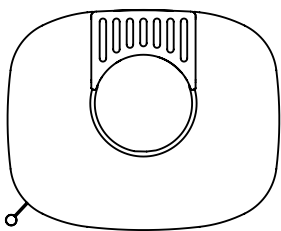
Nominal heat output	4.9 kW	4.9 kW
Net efficiency	82%	81%
Smoke outlet	Ø150 mm	Ø150 mm
Width of combustion chamber	358 mm	358 mm
Energy efficiency class	<b>A+</b>	<b>A+</b>

For more information about the HWAM 4500-Series, see **page 64**.

# HWAM 4500

Design: Sørig & Jacobsen

## HWAM 4500 top view



**HWAM 4520c**  
H 755 mm  
W 500 mm  
D 406 mm



**HWAM 4510c**  
side glass and plinth  
H 810 mm  
W 500 mm  
D 406 mm



**HWAM 4510c**  
side glass and low base  
H 930 mm  
W 500 mm  
D 406 mm



**HWAM 4520m**  
high base  
H 1040 mm  
W 500 mm  
D 406 mm



**HWAM 4530m**  
side glass  
H 1143 mm  
W 500 mm  
D 406 mm



**HWAM 4540c**  
H 1143 mm  
W 500 mm  
D 406 mm



**HWAM 4540c**  
soapstone  
H 1143 mm  
W 500 mm  
D 406 mm



**HWAM 4550m**  
side glass, grey  
H 1388 mm  
W 500 mm  
D 406 mm

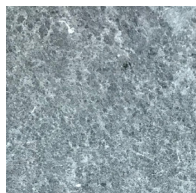


**HWAM 4560c**  
H 1388 mm  
W 500 mm  
D 406 mm

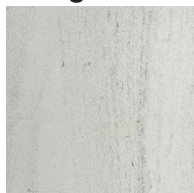


**HWAM 4560m**  
Tobacco  
H 1388 mm  
W 500 mm  
D 406 mm

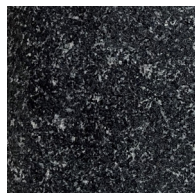
## Natural stone claddings



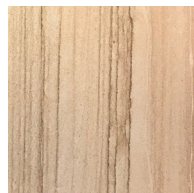
Soapstone



Moca Cream



Dark Galaxy



Tobacco



With  
 HWAM® Autopilot™  
 as standard and  
 HWAM® SmartControl™  
 as an option\*

HWAM 4620c

\* Not HWAM 4620

**Specifications**



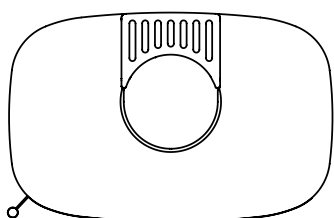
Nominal heat output	7.0 kW	8.0 kW
Net efficiency	79%	81%
Smoke outlet	Ø150 mm	Ø150 mm
Width of combustion chamber	490 mm	490 mm
Energy efficiency class	<b>A</b>	<b>A+</b>

For more information about the HWAM 4600-Series, see **page 68**.

# HWAM 4600

Design: Sørig & Jacobsen

## HWAM 4600 top view



**HWAM 4620c**

H 848 mm  
W 630 mm  
D 406 mm



**HWAM 4640m**

H 1143 mm  
W 630 mm  
D 406 mm



**HWAM 4640m**

soapstone  
H 1143 mm  
W 630 mm  
D 406 mm



**HWAM 4660c**

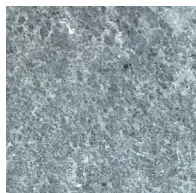
H 1388 mm  
W 630 mm  
D 406 mm



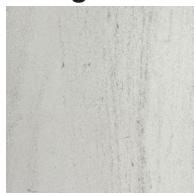
**HWAM 4660c**

Dark Galaxy  
H 1388 mm  
W 630 mm  
D 406 mm

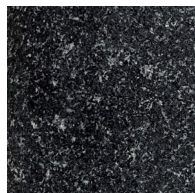
## Natural stone claddings



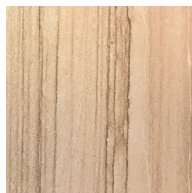
Soapstone



Moca Cream



Dark Galaxy



Tobacco



HWAM 5580c - right hinged door, discreet handle

## Specifications



Nominal heat output	6.4 kW	6.0 kW
Net efficiency	80%	83%
Smoke outlet	Ø150 mm	Ø150 mm
Width of combustion chamber	443-627 mm	443-627 mm
Energy efficiency class	<b>A</b>	<b>A+</b>

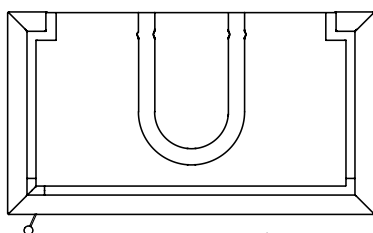
For more information about the HWAM 5500-Series, see **page 70**.



# HWAM 5500

Design: Sørig & Jacobsen

## HWAM 5500 top view



## Handles



Traditional handle



Discreet handle



**HWAM 5560m**  
left hinged door &  
discreet handle  
H 1400 mm  
W 815 mm  
D 452 mm

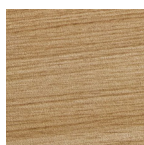


**HWAM 5580c**  
right hinged door &  
traditional handle  
H 1625 mm  
W 815 mm  
D 452 mm

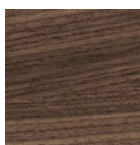


**Tall module**  
with 2 shelves  
H 1625 mm  
W 450 mm  
D 450 mm

## Drawer fronts



Oak



Walnut



**Wide module**  
with drawer, oak front  
H 485 mm  
W 900 mm  
D 450 mm



**Wide module**  
without drawer  
H 485 mm  
W 900 mm  
D 450 mm



**Narrow module**  
with drawer, oak front  
H 485 mm  
W 450 mm  
D 450 mm



**Narrow module**  
without drawer  
H 485 mm  
W 450 mm  
D 450 mm



Right or left  
hinged door

With  
HWAM® Autopilot™  
as standard

HWAM 5670m - right hinged door

## Specifications



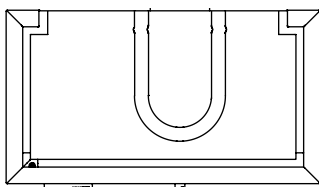
Nominal heat output	7.1 kW
Net efficiency	79%
Smoke outlet	Ø150 mm
Width of combustion chamber	663 mm
Energy efficiency class	<b>A</b>

For more information about the  
HWAM 5600-Series, see **page 72**.

# HWAM 5600

Design: Sørig & Jacobsen

## HWAM 5600 top view



### HWAM 5610m

left hinged door  
H 950 mm  
W 815 mm  
D 452 mm



### HWAM 5630c

left hinged door  
H 1175 mm  
W 815 mm  
D 452 mm



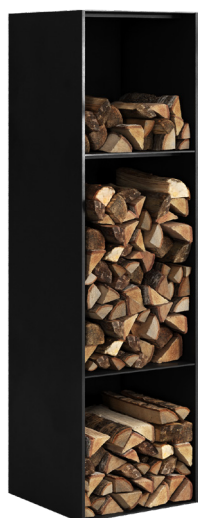
### HWAM 5650m

right hinged door  
H 1400 mm  
W 815 mm  
D 452 mm



### HWAM 5670c

left hinged door  
H 1625 mm  
W 815 mm  
D 452 mm



## Drawer fronts



Oak

Walnut



### Wide module

with drawer, oak front  
H 485 mm  
W 900 mm  
D 450 mm



### Wide module

without drawer  
H 485 mm  
W 900 mm  
D 450 mm



### Narrow module

with drawer, oak front  
H 485 mm  
W 450 mm  
D 450 mm



### Narrow module

without drawer  
H 485 mm  
W 450 mm  
D 450 mm







Right or left  
hinged door

With  
HWAM® Autopilot™  
as standard and  
HWAM® SmartControl™  
as an option

HWAM I 40/55c - right hinged door, discreet handle

### Specifications

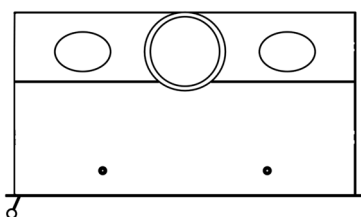
	 AUTOPILOT™	 SMART CONTROL™
Nominal heat output	6.4 kW	6.0 kW
Net efficiency	80%	83%
Smoke outlet	Ø150 mm	Ø150 mm
Width of combustion chamber	443-627 mm	443-627 mm
Energy efficiency class		

For more information about the  
HWAM I 40/55-Series, see **page 74**.

# HWAM I 40/55

Design: Sørig & Jacobsen

## HWAM I 40/55 top view



## Handles



Traditional handle



Discreet handle



### HWAM I 40/55c

right hinged door, discreet handle  
standard frame  
H 569 mm  
W 770 mm  
D 396 mm



### HWAM I 40/55m

right hinged door, traditional handle  
standard frame  
H 569 mm  
W 770 mm  
D 396 mm

## Customized frames



### Standard frame 20 mm

Standard measures. This frame is integrated as standard if no customised frame is chosen.



### Without bent edges

3 mm thick flat frame without bent edges. Made with customised measures with or without sides.



### With bent edges

Frame with bent edges. Made with customised measures with or without sides.



### In-built depth of 350 mm

Standard measures. With this frame an in-built depth of 350 mm is achieved.



Right or left  
hinged door

With  
HWAM® Autopilot™  
as standard

HWAM I 40/56m - right hinged door

## Specifications



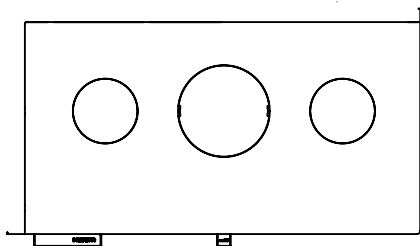
Nominal heat output	7.1 kW
Net efficiency	79%
Smoke outlet	Ø150 mm
Width of combustion chamber	663 mm
Energy efficiency class	<b>A</b>

For more information about the  
HWAM I 40/56-Series, see **page 76**.

# HWAM I 40/56

Design: Sørig & Jacobsen

HWAM I 40/56 top view



**HWAM I 40/56c**  
 right hinged door  
 H 569 mm  
 W 770 mm  
 D 396 mm



**HWAM I 40/56m**  
 left hinged door  
 H 569 mm  
 W 770 mm  
 D 396 mm



HWAM Classic 4 – baking oven and wood store

## Specifications



Nominal heat output	8 kW
Net efficiency	79.3%
Smoke outlet	Ø150 mm
Width of combustion chamber	400 mm
Energy efficiency class	<b>A</b>

Baking oven:  
Achievable temperature  
up to 240° C

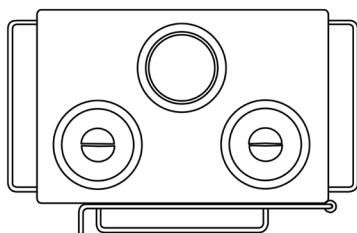
With  
HWAM® Autopilot™  
as standard



# HWAM Classic 4

Design: Anders C. Fasterholdt

## HWAM Classic 4 top view



### HWAM Classic 4

2 hotplates  
H 721 mm  
W 600 mm  
D 400 mm



### HWAM Classic 4

2 hotplates &  
wood store  
H 941 mm  
W 600 mm  
D 400 mm



### HWAM Classic 4

baking oven  
H 1099 mm  
W 600 mm  
D 400 mm



### HWAM Classic 4

baking oven &  
wood store  
H 1319 mm  
W 600 mm  
D 400 mm

HWAM Classic 4 is available either with hotplates or with a baking oven.

# HWAM Accessories

Complete your HWAM wood-burning stove with accessories. A beautiful floor plate to match your choice of model perfectly or a practical and sculptural way of storing your firewood? Prolong the warmth of the fire with heat storing stones or have fresh air supplied from the outside for better combustion and a better indoor climate.

## Firewood trolley

A HWAM Firewood trolley is a practical and robust helper when you transport firewood to your wood-burning stove. Thanks to its large wheels and a sturdy handle, it is easy to push the box, even when filled with wood. The design is elegant and matches all our stoves.

## Firewood bucket

A classic and robust firewood bucket that will look decorative next to your wood-burning stove.

## Wall-mounted firewood storage

If you want to keep your floor space, our round firewood storage solution will do the trick. Available in various sizes.

## Floor plates

A tailor-made floor plate is available for most of our wood-burning stove models. We have developed floor plates in steel and glass adapted to the shape of your wood-burning stove. Aesthetically, the plates will match any interior design style, and they are easy to remove for cleaning purposes.

## Heat storing stone

Selected HWAM models are designed with a heat storage compartment that can be filled with heat storing stone. This type of stone has a special ability to store the heat from the stove and slowly release it into the room. This means that you can enjoy the heat long after the fire has gone out. The models appear from the product overview on page 46.

## Steel bench

Our new and exclusive steel bench is ideal when you want to raise your wood-burning stove from the floor. A bench height of 330 mm offers an excellent view of the flames and facilitates lighting up and re-stoking. Furthermore, your firewood can be handily stored underneath. The steel bench is made of steel and has a stylish matt black finish.

The following models can be placed on the steel bench: HWAM 2610/2620, HWAM 3110, HWAM 4510/4520 and HWAM 4620.



## Wall-mounted firewood storage

Available in grey or black.  
Ø 422 mm. D 270 or 350 mm  
Ø 600 mm. D 270 or 350 mm

## SmartBackup

The battery module, SmartBackup, is purchased separately and is easy to install on the HWAM® SmartControl™ system. We have developed this so we can offer you perfect security in relation to our technological system. We want it to be as easy and secure as possible for you to take advantage of technological combustion control in your HWAM stove. The battery means you are not dependent on the power supply, if there is a power outage.

## Fresh air system

Many new or newly renovated houses are so well isolated that they may prevent the supply of combustion air from the room. As a consequence, the wood-burning stove will be lacking air. This may be remedied by connecting a fresh-air system to your wood-burning stove.

## Steel bench

H 330 mm  
W 1250 mm  
D 450 mm





**Firewood trolley**

H 875 mm  
 W 505 mm  
 D 385 mm



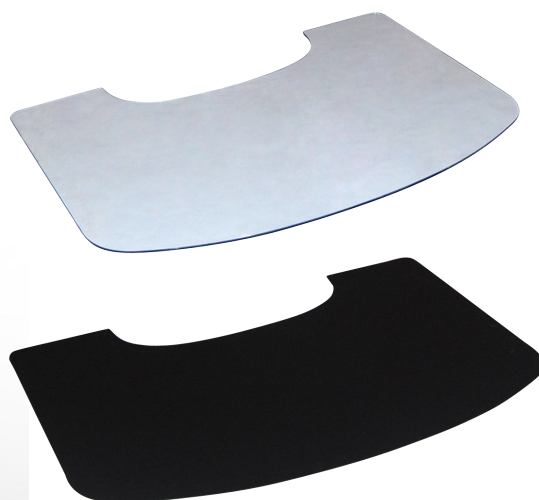
**Firewood bucket**

H 300 x Ø428 mm  
 W incl. handle: 486 mm



**Floor plates**

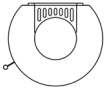
Available in glass or steel.  
 Adapted to the shape of  
 your wood-burning stove.



# PRODUCT OVERVIEW

Selection of HWAM model variants, see options for each series in the table on the opposite page.

## HWAM 2600



HWAM 2610m



HWAM 2620c  
grey, plinth



HWAM 2610c  
pedestal



HWAM 2630m



HWAM 2630c  
grey

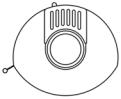


HWAM 2640m  
grey



HWAM 2640c

## HWAM 3100



HWAM 3110m



HWAM 3110c  
plinth



HWAM 3110c  
pedestal



HWAM 3120m



HWAM 3120c  
Style handle,  
stainless steel

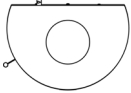


HWAM 3130m  
grey



HWAM 3130c

## HWAM 3500



HWAM 3520c



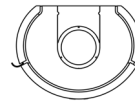
HWAM 3520m  
soapstone



HWAM 3520c  
Moca Cream



HWAM 3520c  
Dark Galaxy  
Style handle,  
stainless steel



## HWAM 3700

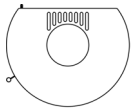


HWAM 3740m



HWAM 3760c  
Style handle,  
stainless steel

## HWAM 3600



HWAM 3630m



HWAM 3640c



HWAM 3630m  
grey



HWAM 3640c  
soapstone



HWAM 3640c  
Moca Cream



HWAM 3640c  
Dark Galaxy



HWAM 3640m  
Tobacco



HWAM 3650m



HWAM 3660c



HWAM 3660c  
grey



HWAM 3660m  
Soapstone

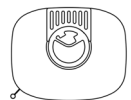


HWAM 3660c  
Moca Cream



HWAM 3660c  
Dark Galaxy

## HWAM 4500



HWAM 4510m



HWAM 4520c  
plinth



HWAM 4510m  
low base



HWAM 4520c  
high base



HWAM 4530m



HWAM 4540c



HWAM 4540c  
soapstone



HWAM 4540c  
Moca Cream



HWAM 4540c  
Dark Galaxy



HWAM 4550c



HWAM 4560m  
soapstone











HWAM 4560c  
Moca Cream



HWAM 4560c  
Dark Galaxy



HWAM 4560m  
Tobacco

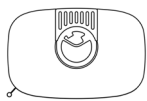
	Function				Design											Connection								
	HWAM® Autopilot™				HWAM® SmartControl™				Black	Grey	Side glass	Classic cast iron door (c-door)	Modern glass door (m-door)	Optional right or left hinged door	Optional handle	Wall-mounted	Plinth, base or pedestal	Heat storage compartment	Natural stone cladding	Wood store and/or baking oven	Smoke outlet, top	Smoke outlet, rear	Fresh air kit, bottom	Fresh air kit, rear
	Nominal heat output, kWh	Net efficiency, %	Chimney draught, Pa	Energy efficiency class	Nominal heat output, kWh	Net efficiency, %	Chimney draught, Pa	Energy efficiency class																
																								
<b>HWAM 2600</b>																								
HWAM 2610	4.7	80	12	A	-	-	-	-	✓	✓	✓	✓	✓	-	-	✓	✓	-	-	-	✓	✓	✓	✓
HWAM 2620	4.7	80	12	A	-	-	-	-	✓	✓	-	✓	✓	-	-	✓	✓	-	-	-	✓	✓	✓	✓
HWAM 2630	4.7	80	12	A	-	-	-	-	✓	✓	✓	✓	✓	-	-	-	-	-	-	-	✓	✓	✓	✓
HWAM 2640	4.7	80	12	A	-	-	-	-	✓	✓	-	✓	✓	-	-	-	-	-	-	-	✓	✓	✓	✓
<b>HWAM 3100</b>																								
HWAM 3110	4.8	79	12	A	-	-	-	-	✓	✓	-	✓	✓	-	✓	✓	✓	-	-	-	✓	✓	✓	✓
HWAM 3120	4.8	79	12	A	4.5	81	11	A+	✓	✓	-	✓	✓	-	✓	-	-	-	-	-	✓	✓	✓	✓
HWAM 3130	4.8	79	12	A	4.5	81	11	A+	✓	✓	-	✓	✓	-	✓	-	-	✓	-	-	✓	✓	✓	✓
<b>HWAM 3500</b>																								
HWAM 3520	4.8	79	12	A	4.5	81	11	A+	✓	✓	-	✓	✓	-	✓	-	-	✓	✓	-	✓	✓	✓	✓
<b>HWAM 3600</b>																								
HWAM 3630	6.0	78.3	11	A	6.0	80.7	12	A+	✓	✓	✓	✓	✓	-	-	-	-	-	-	-	✓	✓	✓	✓
HWAM 3640	6.0	78.3	11	A	6.0	80.7	12	A+	✓	✓	-	✓	✓	-	-	-	-	✓	-	-	✓	✓	✓	✓
HWAM 3650	6.0	78.3	11	A	6.0	80.7	12	A+	✓	✓	✓	✓	✓	-	-	-	-	✓	-	-	✓	✓	✓	✓
HWAM 3660	6.0	78.3	11	A	6.0	80.7	12	A+	✓	✓	-	✓	✓	-	-	-	-	✓	✓	-	✓	✓	✓	✓
<b>HWAM 3700</b>																								
HWAM 3740	4.8	79	12	A	4.5	81	11	A+	✓	✓	-	✓	✓	-	✓	-	-	-	-	-	✓	✓	✓	✓
HWAM 3760	4.8	79	12	A	4.5	81	11	A+	✓	✓	-	✓	✓	-	✓	-	-	✓	-	-	✓	✓	✓	✓
<b>HWAM 4500</b>																								
HWAM 4510	4.9	82	12	A+	4.9 <sup>1)</sup>	81 <sup>1)</sup>	12 <sup>1)</sup>	A+	✓	✓	✓	✓	✓	-	-	✓	✓	-	-	-	✓	✓	✓ <sup>2)</sup>	✓
HWAM 4520	4.9	82	12	A+	4.9 <sup>1)</sup>	81 <sup>1)</sup>	12 <sup>1)</sup>	A+	✓	✓	-	✓	✓	-	-	✓	✓	-	-	-	✓	✓	✓ <sup>2)</sup>	✓
HWAM 4530	4.9	82	12	A+	4.9	81	12	A+	✓	✓	✓	✓	✓	-	-	-	-	-	-	-	✓	✓	✓	✓
HWAM 4540	4.9	82	12	A+	4.9	81	12	A+	✓	✓	-	✓	✓	-	-	-	-	✓	-	-	✓	✓	✓	✓
HWAM 4550	4.9	82	12	A+	4.9	81	12	A+	✓	✓	✓	✓	✓	-	-	-	-	✓	-	-	✓	✓	✓	✓
HWAM 4560	4.9	82	12	A+	4.9	81	12	A+	✓	✓	-	✓	✓	-	-	-	-	✓	✓	-	✓	✓	✓	✓

1) HWAM 4510/4520 on low plinth, not supplied with HWAM SmartControl™  
2) Please note that connection pipes (fresh air, bottom) will be visible when mounting on HWAM 4510/4520.

# PRODUCT OVERVIEW

Selection of HWAM model variants, see options for each series in the table on the opposite page.

## HWAM 4600



HWAM 4620m



HWAM 4620c



HWAM 4640m



HWAM 4640c



HWAM 4640m  
soapstone



HWAM 4640m  
Moca Cream



HWAM 4640m  
Dark Galaxy



HWAM 4660m



HWAM 4660c



HWAM 4660m  
grey



HWAM 4660c  
soapstone



HWAM 4660c  
Moca Cream

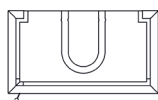


HWAM 4660c  
Dark Galaxy



HWAM 4660m  
Tobacco

## HWAM 5500

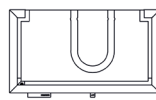


HWAM 5560m



HWAM 5580c

## HWAM 5600



HWAM 5610m

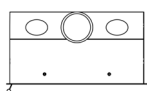


HWAM 5630c



HWAM 5670m

## HWAM I 40/55

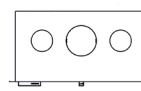


HWAM I 40/55c  
left hinged door



HWAM I 40/55m  
right hinged door

## HWAM I 40/56

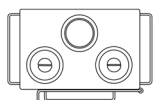


HWAM I 40/56m  
left hinged door



HWAM I 40/56c  
right hinged door

## HWAM Classic 4



HWAM Classic 4  
2 hotplates



HWAM Classic 4  
2 hotplates &  
wood store



HWAM Classic 4  
baking oven



HWAM Classic 4  
baking oven &  
wood store

	Function				Design												Connection							
	HWAM® Autopilot™				HWAM® SmartControl™				Black	Grey	Side glass	Classic cast iron door (c-door)	Modern glass door (m-door)	Optional right or left hinged door	Optional handle	Wall-mounted	Plinth, base or pedestal	Heat storage compartment	Natural stone cladding	Wood store and/or baking oven	Smoke outlet, top	Smoke outlet, rear	Fresh air kit, bottom	Fresh air kit, rear
	Nominal heat output, kWh	Net efficiency, %	Chimney draught, Pa	Energy efficiency class	Nominal heat output, kWh	Net efficiency, %	Chimney draught, Pa	Energy efficiency class																
<b>HWAM 4600</b>																								
HWAM 4620	7.0	80	12	A	-	-	-	-	✓	✓	-	✓	✓	-	-	-	-	-	-	✓	✓	✓	✓	
HWAM 4640	7.0	80	12	A	8.0	81	12	A+	✓	✓	-	✓	✓	-	-	-	-	✓	-	✓	✓	✓	✓	
HWAM 4660	7.0	80	12	A	8.0	81	12	A+	✓	✓	-	✓	✓	-	-	-	✓	✓	-	✓	✓	✓	✓	
<b>HWAM 5500</b>																								
HWAM 5560	6.4	80	12	A+	6.0	83	12	A+	✓	-	-	✓	✓	✓	✓	-	-	✓	-	✓	✓	✓	✓	
HWAM 5580	6.4	80	12	A+	6.0	83	12	A+	✓	-	-	✓	✓	✓	✓	-	-	✓	-	✓	✓	✓	✓	
<b>HWAM 5600</b>																								
HWAM 5610	7.1	79	12	A	-	-	-	-	✓	-	-	✓	✓	✓	-	-	-	-	-	✓	✓	✓	✓	
HWAM 5630	7.1	79	12	A	-	-	-	-	✓	-	-	✓	✓	✓	-	-	-	-	-	✓	✓	✓	✓	
HWAM 5650	7.1	79	12	A	-	-	-	-	✓	-	-	✓	✓	✓	-	-	✓	-	-	✓	✓	✓	✓	
HWAM 5670	7.1	79	12	A	-	-	-	-	✓	-	-	✓	✓	✓	-	-	✓	-	-	✓	✓	✓	✓	
<b>Inserts</b>																								
HWAM I 40/55	6.4	80	11	A	6.0	83	12	A+	✓	-	-	✓	✓	✓	✓	-	-	-	-	✓	✓	✓	✓	
HWAM I 40/56	7.1	79	12	A	-	-	-	-	✓	-	-	✓	✓	✓	-	-	-	-	-	✓	✓	✓	✓	
<b>HWAM Classic 4</b>																								
HWAM Classic 4	8.0	79.3	12	A	-	-	-	-	✓	✓	-	✓	-	-	-	-	-	-	✓	✓ <sup>1)</sup>	✓ <sup>1)</sup>	-	✓	

1) HWAM Classic 4 with baking oven must be installed with a top outlet.